

Medontic

Specialists in Medical and Dental Technology Equipment



Content

Introduction	2
Dental Chairs	
• The Elexa Range	3
• The Ritter Range	8
Dental Upholstery	11
Dental Monitors	13
Panel PC's	14
X-Rays	
• Dabi-Atlante	15
• Satelec	16
• Panoramic X-Rays	17
• Handheld X-Ray	19
3D Dental and CT Imaging	
• Lynx 3D Platinum Software	20
• ORION Paradigm in 3D Dental Imaging	21
Satelec Scalers	
• P5 Newtron	22
• P5 Newtron XS	23
• P-MAX XS	24
Dental Headpieces	26
Optic Coupling	27
NSK Micromotor	27
NSK Air Motor	28
Steralizers, Millwasher & Millrack	29
Vista Scan Perio	30
Dental Yap Laser	31
Central Suction with Amalgam Separator for 1 surgery	32
Compressor	33
Dental Microscopes	34
Dental Lights	35
Dental Cameras	39
Repair and Maintenance	42
Contact Us	43

Introduction

Medontic is a Medical & Dental Equipment Supplier based in Northampton, England. Using over 20 years experience in medical equipment management we specialise in offering Clinicians and Dentists, the latest in equipment technology.

Our selected products on sale have fulfilled the selection criteria of providing the user with excellent performance at very competitive prices and good value for money. We are constantly improving our products to cater for our clients' needs. In support of the product we offer advice on selection, procurement, training, repair and maintenance.

We work with dentists who have a problem choosing the right equipment for their surgeries. What we do is offer dentists a One-Stop-Shop utilising our experiences in working with clinicians who have '**been there and done it**'. What we guarantee is a specialist solution to your equipping challenge. Which means you can rest assured that you will have the best equipment and cabinetry installed and fitted within budget and time scale. Optimising your working space inside your surgery making you work in comfort with faster work flow and keeping you excited to work in your surgery every day of the week!

Elexa ZCS300



Unit Features:

- Hanging Tube Delivery Unit
- High speed air turbine with fibre optic connection
- Low speed air motor connection
- Ultrasonic Scaler
- Three way syringe
- Electronic Control Pad with 3 programmable chair position
- Halogen Lamp with Motion Sensor (No Touch Power ON)
- 24V X-RAY Viewer and handpiece holder
- High suction on assistant arm
- Saliva ejector on assistant arm
- Three way syringe on assistant arm
- Injecting Water purified system
- Integral ELEXA glass cuspidor (grey)
- Automatic cup filler
- Flush System
- Operating Light
- Upholstery for Elexa chair - (Please ask for colours available)
- Computer Control System
- Linak Chair motors (Denmark)
- Air-lock balance arm system

Operating Light Features:

- Motion Sensor switch
- low and high light intensity

Cuspidor Features:

- porcelain cuspidor
- rotating cuspidor
- spittoon flush
- cup filling
- easy cleaning and disinfecting

Foot Control:

- Water on/off switch
- Chip Blower
- Standard Activation of Chair

Elexa Superior



Unit Features:

- swinging dentist's element (option: hanging dentist's element)
- operating light
- rotating cuspidor
- assistant element
- synchronized chair movement
- aqua water bottle system
- luxury double articulated headrest

Patient's Chair:

- Electric chair with 24V motor driven
- Armrest left or right
- 3 programmable positions
- Rinsing position
- Seat tilting synchronized with inclination of backrest
- Seamless upholstery
- Porcelain cuspidor bowl
- Operating light
- Clean water with bottle system
- luxury double articulated headrest

Options:

- swinging dentist's element (option: hanging dentist's element)
- operating light
- rotating cuspidor
- assistant element
- synchronized chair movement
- aqua water bottle system

Doctor's Element:

- 3 tubing's with 4 holes
- Dentist's tray table
- Assistant's touch pad control
- swinging outlets system
- three Midwest outlets for turbine and air motor
- one free position for additional outlet
- three-way syringe
- x-ray film viewer
- air pressure indicator
- air brake
- dentist 's touch pad control for chair and unit functions
- single tray support
- additional double tray support

Foot Control Features:

- build in foot control for chair movement
- cable foot control for rotating instruments
- button for chip blower
- button for water spray

Elexa Ultimate



Doctor's Element:

- Designed for maximum comfort for dentists and patients
- Optional with right swing-away armrest
- Double articulated headrest for best comfort
- Seamless upholstery ideal for cleaning and disinfection
- hanging outlets system
- 6 ergonomic instrument holders
- three midwest outlets for turbine and air motor
- three-way syringe
- x-ray film viewer
- air pressure indicator
- air brake
- dentist 's touch pad control for chair and unit functions
- double tray support
- silicon pad
- bowl flush
- operation light
- cup filler
- instrument light on/off
- heating cup filler
- x-ray viewer on/off

Options

- right armrest
- outlet with F.O. for turbine and air motor
- ultrasonic scalar
- 6F LUZZANI syringe dentist's side instead 3F
- panoramic x-ray viewer
- Micro motor Bien Air MC3 F.O.
- second stool dentist / assistant
- operating light Faro instead of standard
- LED curing light
- amalgam collector
- single dry or wet suction
- central dry or wet suction

Foot Control Features:

- foot control for chair movements
button for entrance/exit position
button for spitton position
- foot control for instruments
button for water spray
button for chip blower
- foot clip

Elexa Ultimate E



Unit Features:

- high quality dental unit
- hanging dentist's element
- high quality operating light
- rotating cuspidor
- up/down movable assistant's element
- high quality electrical patient chair
- synchronized chair movement
- aqua water bottle system
- high quality seamless upholstery available in 5 colours
- high quality electrical chair (24V motor driven)
- synchronized chair movement
- 4 programmable positions
- chair foot control
- single armrest
- high quality aluminium backrest frame
- high quality seamless upholstery

Operating Light Features:

- on/off switch
- low and high light intensity
- lamp burst protection

Cuspidor Features:

- porcelain cuspidor
- rotating cuspidor
- spittoon flush
- cup filling
- easy cleaning and disinfecting

Foot Control Features:

- foot control for chair movements
button for entrance/exit position
button for spittoon position
- foot control for instruments
button for water spray
button for chip blower
- foot clip

The Ritter Elite Range



Ritter is a 120 year old German developer and manufacturer of top quality dentist`s units. Their forward-looking, contemporary product range makes Ritter one of the most capable providers on the market. Ritter products are extremely versatile and are used in private practices, hospitals and public establishments. Ritter is a company with a modern philosophy and a distinctive innovation culture. Their main focus is always on dentists and their requirements. Their products are both surprising and fascinating by means of new techniques, ease of use, and excellent design. The key to their success is their willingness to venture into new areas. Ritter bypasses traditional contradictions with unconventional means. It combines long-term strategic orientation with the ability to react to change both rapidly and flexibly. A combination of creativity and comprehensive technological expertise discovers and manipulates the future with the diversity of their ideas and skills. Astute knowledge management links up with the expertise of their employees and encourages interaction between all of business areas. Their information and communication systems also create synergy effects with new quality. The way in which Ritter`s visions is transformed into products that are ready for production is trend-setting. Experts in the research and development department are discovering new competitive advantages all the time. Such as in the use of computer-aided tools, state-of-the-art computers and network technologies to develop techniques that is the basis for product ideas and innovative applications. Ritter`s slick, swift manufacturing processes are truly impressive. Modern outsourcing strategies and cutting edge production and test systems are the guarantee of efficiency and quality with a considerable degree of flexibility.

Ritter Contact Lite



In 1887, Frank Ritter produced one of the world's first chairs for the dental profession. In the now over 115 years of existence, Ritter became one of the leading dental equipment manufacturers always striving for innovative leads, excellent product quality and a product segmentation, which allows every dentist to enjoy a Ritter.

The Ritter dental units Contact **Lite** and Contact **Lite Comfort** offer unreached ergonomics, flexibility, aesthetics, and a wide range of options geared to each specific requirement.

- Patient's Chair
- Versatile headrest for best comfort
- Doctor's Element S/H/C
- Master touch pad to control all chair functions, light and cuspidor as well as all instruments
- Integrated fibre optic control for drilling instruments
- Hygienic, disinfectable control panel
- Assistant's Unit
- Instrument section for 3 instruments
- Swivel arm allows optimal positioning of instruments
- Ceramic, thermo-disinfectable cuspidor
- Optional with right swing-away armrest
- Optional simultaneous movement of chair and backrest Ritter

Ritter Contact Lite ECO



One of the world's oldest and most experienced dental unit manufacturer guarantees for unique production knowledge and the use of best and most economic materials and parts available in the industry.

With the Contact Lite Economy, Ritter combines technology and know-how at a very affordable level. These outstanding features make it to one of the most attractive dental units today.

- Patient's Chair
- Designed for maximum comfort for dentists and patients
- Simultaneous movement of chair and backrest
- Versatile, double articulating headrest
- Seamless, disinfected upholstery
- Doctor's Element
- Master touch panel for all chair and instrument functions, light and cuspidor
- Up to 5 instruments
- Hygienic and disinfected surface
- Touch panel for instruments, spittoon and chair functions
- Up to 4 instrument holders
- Thermo-disinfected spittoon bowl
- Dentist's and Assistant's stools
- Adjustable and ergonomical
- Optional with foot ring
- 5 castors for ideal stability

Dental Upholstery

We at Medontic would like dentists to feel at ease when choosing the exact colours for their Dental Surgery. To aid with this choice we have a range colours that comply with the current legislation and law. Vinyl colours may appear slightly different, due to computer monitor resolutions & graphic cards.



The above range of vinyl is available in 85 colours. This range is suited for use in infection control areas. The vinyl range utilises the advanced 'BEAUTY GUARD' protective system. The vinyl contains agents to protect against bacterial & fungal micro-organisms. This specific range is manufactured to meet ISO 9001.

Exclusive Range



This range of vinyl is available in 29 colours. The vinyl is suitable for use with infection control areas. Please note that this range of vinyl is NaDDC compatible. This colour range is manufactured to meet the approved procedure of IS EN ISO 9002 & BS EN ISO 9002 quality systems. Please note that both ranges of vinyl comply with fire safety regulations.

Dental Monitors



AG Neovo DR-17 (STAND)



AG Neovo X-17AV White



AG Neovo DR-17 (GRABHANDLE)



AG Neovo X-15AV Black



AG Neovo X-17AV Black



AG Neovo X-15AV White

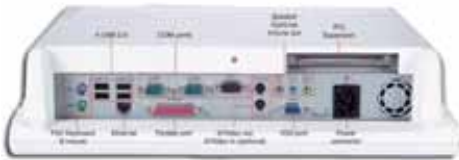
Please contact Medontic for more information about individual monitor specifications

Panel PC'S

Panel PC 15



Please contact us for pricing



The integrated PC a medical device with Pentium Mobile technology Did Dental Instrument Design in introducing a new product family assigned at the "Healthcare" market segment. These 2 Panel PC models are designed for surgery rooms, easily fitted in any holding arms and therefore on any dental unit. These new Panel PC are either 15 or 17" with high brightness and high definition. They are equipped with latest Intel microprocessor low consumption and high performances, the ones used on portable PC "Centrino". An attractive look, the reduced dimensions and the 8 Kg of weight gets this item as an unique product adaptable in any premises type. This system offer all the I/O ports to connect cameras, RX sensors, acquisition cards, wireless networks and basically all the needed input units for a dental office or for a surgery rooms. Moreover they are extremely silent and furthermore certified according to EN 601-1-1. Overall this result in one of the more advanced product for sanitary field and in the Information

Accessories included in PC

USB external DVD writer, wireless keyboard with a integrated mouse

Panel PC 17



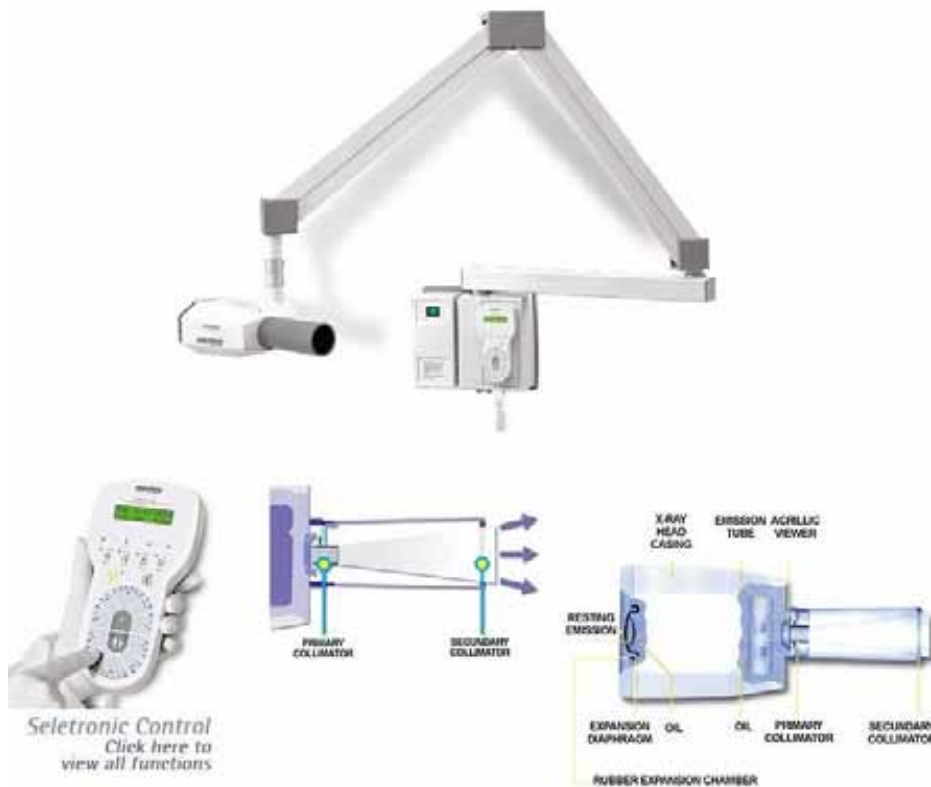
Please contact us for pricing

The integrated PC a medical device with Pentium Mobile technology Did Dental Instrument Design in introducing a new product family assigned at the "Healthcare" market segment. These 2 Panel PC models are designed for surgery rooms, easily fitted in any holding arms and therefore on any dental unit. These new Panel PC are either 15 or 17" with high brightness and high definition. They are equipped with latest Intel microprocessor low consumption and high performances, the ones used on portable PC "Centrino". An attractive look, the reduced dimensions and the 8 Kg of weight gets this item as an unique product adaptable in any premises type. This system offer all the I/O ports to connect cameras, RX sensors, acquisition cards, wireless networks and basically all the needed input units for a dental office or for a surgery rooms. Moreover they are extremely silent and furthermore certified according to EN 601-1-1. Overall this result is one of the more advanced product for sanitary field and in the Information Technology. In the same time the new Panel PC surely are the most prestigious solution today available in the Dental field.

Accessories included in PC

USB external dvd writer, wireless keyboard with a integrated mouse
Technical Specification

X-Rays



Dabi Atlante Digital X-ray -

This is a 70 KV AC power Inter-oral wall mounted X-ray Unit

Optimizes space, providing, safety, precision and practicality.

Automatic Time Compensation Device: Automatically corrects the exposure time, according to the tension oscillations in the power line. The result is an excellent radiographic quality, reducing the occurrence of errors and increasing the durability of the device.

- Safety Device
- The Dabi X-Ray instruments have a blocking mechanism which avoids accidental shots and thus eliminates unnecessary exposures to radiation and overheating.
- Seletronic Control
- The instrument enables the most adequate time for each specific situation with great precision.



Satelec X-Ray X-Mind DC

Satelec X-Ray X-Mind DC is your best solution for digital interoral imaging. The new X-Mind DC generator is fitted with a Toshiba DG-073B-DC double anode tungsten tube (intensity of 4mA and 8mA). It generates a constant voltage of 60kV or 70kV. It operates at high frequencies and constant potential which enables very high quality radiation to be emitted, whatever the conditions of use.

The choice of voltage (60 or 70kV) and intensity (4 or 8mA) enables optimal diagnosis of intraoral X-rays with a 35% reduction in exposure time, compared with monophased units.

The timer can control up to two DC generators. The extremely short exposure times (minimum 0.02 sec.) are suitable for digital radiology with CCD, CMOS or phosphor plate sensors (radiation is 50% less than that used with "E" type films).

RITTER Panoramic Dental X-Rays

TAURUS Panoramic Dental X-ray



The TAURUS RP-88 employs new state of the art CdTe (Cadium Telluride) imaging technology which produces images with 300% higher resolution than its competitors. The new CdTe sensor technology employed in the TAURUS RP-88 provides up to 300 individual images per single panoramic exposure. These images are combined using our own proprietary LYNX™ Software to produce multiple Panoramic layers of unparalleled quality and clarity.

This new and exciting technology will revolutionize global dental imaging. Unlike other dental radiology sensors, CdTe sensors directly convert X-ray energy to electronic signals, thus increasing image quality while reducing unnecessary exposure to harmful X-ray energy.

By not converting X-ray energy to light first, as is the case with CCD sensors, CdTe sensors eliminate blurring thus creating crisp, clear images. Additionally, clarity and contrast are increased up to 300% compared to images from other technology sensors.

The unit's compact size and form allows it to fit into the smallest dental office. Since it works off main voltage, it does not require special outlets.

The TAURUS™ RP-88 produces the LOWEST radiation exposure to the patient, and is gentle to the environment.

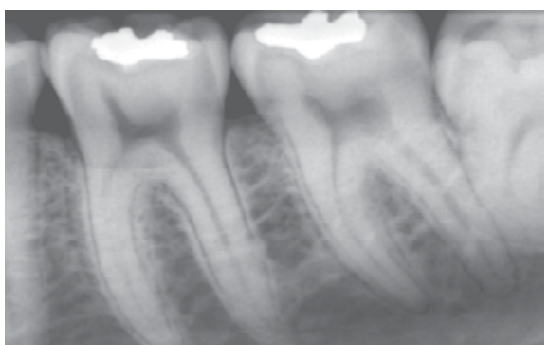
TAURUS Pan/Ceph Dental X-ray



The new TAURUS RPC-88 employs new state of the art CdTe imaging technology. The RP & RPC series generate images which are 300% higher resolution than their competitors. The new CdTe (Cadmium Telluride) sensor technology provides up to 300 individual images per second during a single Panoramic or Cephalometric exposure. These images are combined using our own proprietary LYNX™ Software to produce multiple panoramic layers of unparalleled quality and clarity.

The TAURUS RPC-88 produces the LOWEST radiation exposure to the patient, and is kind to the environment. At just 1.5m in height, the TAURUS RPC-88's compact size and form allow it to fit into the smallest dental office.

RITTER VEGA Portable Hand-Held X-Ray



VEGA is housed in clean elegant housing that is easy to clean and carry on field trips. Vega is a low dose portable x-ray unit that is suitable in approved dental offices for use in conjunction with film, digital media such as phosphor plates, CCD, CMOS and the all-new CdTe LST™ sensors.

VEGA is a digitally controlled, high frequency inverter, low dose portable X-ray unit generator. Exposure settings start at 0.01sec and are digitally selectable to a maximum of 2.0 secs, for a total of forty-six (46) exposure options. VEGA provides a high quality digital readout to display selected exposure time, while the voltage is constant at 60KV and 2mA. VEGA's low radiation footprint makes it safe for both the patient and user alike.

VEGA may be used as a wall mounted or as an in office portable x-ray unit. All accessories, including battery charger, is included. The Vega's robustness, lightweight and small size make it well suited in the forensic environment.

RITTER 3D Dental CT Imaging4

Dental Imaging Software

LYNX 3D Platinum



Ritter Imaging sports two imaging software packages, namely; LYNX and LYNX 3D. The LYNX imaging software supports non 3D products namely; TAURUS, GEMINI, VEGA, RENZO, while LYNX 3D supports our 3D ORION Cone Beam CT unit. Both products are from a medical background and are designed and built with reliability and durability in mind.

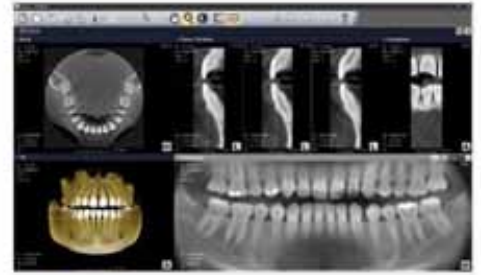
The LYNX software focuses on 2D image capture, image enhancement, diagnostic tools, practice management integration, work flow enhancement, patient database management, and DICOM conformance.

The LYNX software utilizes a medical interface and GUI presenting images so that diagnosis is enhanced. In addition, it provides implant simulation software so dentists who do not have access to dental CT's are not disadvantaged.

Ritter's LYNX is intuitive, fast, and reliable and is able to capture, still images such as panoramic, cephalometric, color, video, and x-ray. Additionally it provides users with reports, image texting, measurements, angle measurements, and density slicing.

LYNX 3D is built strictly for 3D imaging application and is the software supporting the company's premier product, our ORION cone beam CT.

LYNX 3D supports the capture of electronic data sets from our CT unit and reconstructs the data so the trained dentist and radiologist are able to diagnose the resulting image. Images can be enhanced and, more importantly, can be sliced to present very minute details in all three dimensions. For technical requirements please download data sheets from our website.



The ORION Dental (MFOV) CT is designed specifically for dental applications. Our LYNX 3D capture and reconstruction software powers the digital display systems.

The ORION CT produces high resolution data sets at fast initial scan of fourteen (14) seconds. An initial total reconstruction rate is less than two minutes. The ORION is particularly suited for dental implant, TMJ and Sinus assessment. With the ORION you will achieve accurate, immediate assessments of your patient's oral pathology.

Provide reassurance to your patients with ORION's considerable reduction in radiation dosage in comparison to traditional CT scans. Build patient confidence in your treatment plans with a clear diagnosis backed by visualization. Best of all, this revolution in dental imaging technology is easily implemented and now affordable.

The ORION RCB-888 is a technological plus for your patients and your practice. ORION, 3D technology for a price you and your patients can afford.

Specifications

- X-ray Focal Spot 0.5
- Voxel Sizes 0.164 (mm³), 0.15 (mm³) in 6", 0.1 (mm³) in 4"
- Type of Detector Image Intensiifier
- Size of Detector 15.2 (6") 10.2 (4")
- Line Pairs approx 18lp/mm
- Grayscale (BIT) 14 bit 16 bit
- Shades of Gray 16,384 65,536
- Field of View 8cm x 8cm 15.2cm (6") 5.3cm x 5.3cm x 10.2cm (4")
- Collimation Down to 1.8cm
- Scan Times 13 sec
- Reconstruction Times less than 2 minutes, less than 2 minutes 30s
- File Size less than 65MB, less than 65MB
- Software NOVA and LYNX™
- Dimensions 1,186 x 1,490 x 1,850 (mm)

SATELEC Scalars

P5 Newtron



Satelec® presents its latest piezoelectric ultrasonic generator: Suprasson® P5 Newtron.

Combining the benefits of powerful Newtron® technology in the state-of-the-art control module and the ergonomics of the patented Satelec Color Coding System, the P5 Newtron provides the best performance and the widest choice of ultrasonic instruments available in the marketplace today.

The Newtron technology enables real-time adjustment of the tips' single plane oscillation amplitude (Cruise Control™) which means a smooth, constant and powerful vibration during treatment.

Guided by the Color Coding System to select the required setting, the power is automatically controlled and adjusted accordingly. Then with just one Newtron handpiece for the widest choice of ultrasonic tips and mini- or micro-instruments adapted to each procedure (CCS Tips™), you immediately optimize the settings that guarantee the best performance and prevent operator fatigue.

Smooth and virtually painless vibrations provide your patients with unbeatable comfort during all treatments including scaling, root planing, endodontics and non-surgical periodontics.

Although it uses highly sophisticated technology, the P5 Newtron is an easy-to-install, compact and reliable table-top device. It has a smooth, modern esthetic design and has been built in stringent compliance with the latest standards and safety regulations. All constituent parts and accessories are either autoclavable or easy to clean and disinfect.

P5 Newtron XS



High performance ultrasonic device with self-contained irrigation

The world's best-selling ultrasonic device from SATELEC® now offers self-contained irrigation providing: greater portability, greater power, greater precision. 300 ml tank easy to fill even during a procedure. Handpiece compatible with the whole range of SATELEC tips.

- Technical specifications
- Supply voltage: 110-115-230 V~ 50/60 Hz
- Equipment classification: Classe I - BF type
- Intermittent duty: 10 min. / 5 min.
- Max. power consumption: 30 VA
- Ultrasonic frequency: 28-36 kHz
- Irrigation flow rate: 5-40 ml/min
- Overall dimensions:
- Width: 160 mm
- Height: 130 mm
- Depth: 310 mm
- Weight: 1700 g
- Footswitch:
- Width: 70 mm
- Height: 30 mm
- Depth: 95 mm
- Weight: 150 g
- Handpiece cord: 2 000 mm

P-MAX XS

Complete control of the device

Hands-free control of power, irrigation and air by the footswitch.



SATELEC presents the first ever autoclavable LED light handpiece with the Air Active function. Extremely powerful LED light(65 000 LUX) for an excellent visibility, even in posterior areas. Air Active, exclusive endo function: elimination of dentinal debris and dry work without heating.

Features:

The best quality light:

- Excellent visibility even in posterior areas,
- Cold light (6 000 – 7 000°K) for better tissue recognition,
- Ideal for working with loupes,
- Powerful (65 000 LUX), very long-lasting LED,
- Handpiece can be autoclaved at 134°C.

Hygiene

- The device can be easily cleaned and disinfected,
- The cord and handpiece can be disconnected. Ergonomic
- Two large-capacity tanks of 300 ml each,
- Easy to fill even during a procedure,
- Ability to use two different solutions,
- Selected tank lights up,
- Easy to purge and rinse.

Complete control of the device

- Hands-free control of power, irrigation and air by the footswitch.

NSK Dental Handpieces

High Speed Turbine

NSK Dental Handpieces MACH-LITE XT -



Featuring a new generation cellular optics, triple water spray and ceramic ball bearings, NSK's MACH-LITE XT sets a new standard for stainless steel high speed handpiece. NSK's cellular glass optics delivers 20% brighter illumination than conventional fibre optics and will not deteriorate from repeated autoclaving. Ceramic ball bearings are 25% harder than stainless steel bearings, but just half the weight. Lower friction results in quieter and heatless operation, especially at high speed, and substantially longer turbine life.

Low Speed Contra-Angles



Ti-Max Ti20 (non optic) 1:1



Ti-Max Ti15 (Non-Optic) 4:1

Ti-Max Ti-series is a range of optic contra-angle handpieces with a variety of speed reduction ratio to satisfy varying needs of clinical procedures. Ratio is available at 16:1, 10:1, 4:1 and 1:1 direct drive. NSK's micro-mechanical engineering successfully incorporates precision gearing unit into the world's slimmest neck. Ti-series also brings the lowest noise and vibration level in its class.

- Product Features
- 4:1 Reduction
- Ti15
- Non-optic
- For CA burs(Ø2.35)
- Slim front-end design for improved direct visibility
- Solid Titanium Body – Best fits in your hand
- Cellular Glass Optics – More illumination for better view
- Clean Head System for enhanced infection control
- Ultra Push Chuck – Simple bur exchange
- Single Spray – Efficient cooling
- Ergo Grip – Secure grip for your confidence

Optic Coupling

High Speed Handpieces

For NSK

Optic

Ti-Max X500L / X600L / X700L



Ti-Max A500L / A600L / A700L



Mach-Lite XT MU/SU/TU



Phatelus 45-SU/TU



Couplings



NSK
PTL-CL-4HV-T



NSK
PTL-CL-4HV

The Non-Retraction Valve is integrated inside the coupling, plus inside air motors. It prevents retraction of contaminated fluids into the handpiece water lines. In combination with the Clean Head System, the Non-Retraction Valve provides an effective method to effectively reduce possible internal contamination.

NSK Micromotor

NSK Ti-Max NL400 Micromotor



The World's Lightest Brushless Micromotor with the Power You Need

Weighs as light as 77g, NSK's NL400 is the world's lightest electric micromotor for dental use. Yet, it generates powerful 3.0 Ncm torque delivering the ideal balance of rotation speed and torque required for all types of clinical procedures. Its 180° Vector Control assures smooth and stepless control throughout the entire speed range. With lower torque ripple ratio, the NL400 offers vibration-free operation for outstanding comfort and long-term reliable performance.

Product Features

- Powerful 3.0 Ncm torque for all types of clinical procedures
- Smooth and quiet operation with 180° Vector Control
- Virtually no heat generation
- Shorter and the lightest micromotor in its class
- Ideal balance by a compact solid titanium body
- Excellent durability assuring a longer life
- Autoclavable titanium brushless micromotor

NSK Air Motor

NSK Air Motor TI-205L M4 Optic Internal Water



The new optic Ti205L NSK Air Motor generates higher torque throughout the entire speed range, with extremely low vibration. 360°swivel air hose joint eliminates bothersome hose drag during a treatment

- Ti205L
- -1:1 Direct Drive
- -Internal Spray
- -LUX Coupling
- -Non-Retraction Valve
- -Max speed 20,500 min-1

NSK EX-203C M4 Air Motors



Model: EX-203C M4 - Serial base: M195
• 1:1 Direct Drive • Midwest 4 hole
• Max speed 20000 rpm



NSK Air Motors are highly durable and fully autoclavable at 135°C max. Connects directly to all types of ISO E-type low speed handpieces. For budget-conscious users, EX-203C, without non-retraction valve but with other sufficient capabilities, is a good choice.

- EX-203C M4
- -1:1 Direct Drive
- -Midwest 4 hole
- -Max speed 20,000 min-1

NSK IS-205 Air Motors Internal Water



The new IS-205 NSK Air Motor generates higher torque throughout the entire speed range, with extremely low vibration. 360° swivel air hose joint eliminates bothersome hose drag during a treatment. IS-205 offers the same functions as Ti205L without optic illumination.

- IS-205 M4
- -1:1 Direct Drive
- -Midwest 4 hole
- -Internal Water
- -Non-Retraction Valve
- -Max speed 22,000 min-1

MOCOM Steralizers, Millwasher & Millrack



Millennium B - The Millennium type B sterilizers are technologically advanced equipments which are also extremely easy to use. Thanks to theirs high number of configuration options and to the corresponding patented devices, they can satisfy any sterilization requirement and ensure the highest performance in every situation



Millennium B+ - The Millennium type B+ sterilizers are technologically advanced equipments which are also extremely easy to use. Thanks to theirs high number of configuration options and to the corresponding patented devices, they can satisfy any sterilization requirement and ensure the highest performance in every situation.



Millennium B2 - The Millennium type B2 sterilizer is technologically advanced equipment which is also extremely easy to use. Thanks to theirs high number of configuration options and to the corresponding patented devices, they can satisfy any sterilization requirement and ensure the highest performance in every situation.



Millennium Bu - For the rapid sterilization of hollow instruments and porous materials, Mocom has designed Millennium Bu the small sized type B sterilizer with an exclusive design. Millenium Bu offers 11 cycles all complete with pre-vacuum and drying, extraordinarily fast that satisfy the most varied sterilisation needs with safe and exceptionally rapid results.



Millwashing - It eliminates the risk of malpractice due to the handling of infected instruments (instruments, turbines, hand-pieces, etc.) and provides treatment and thermal disinfection Completely automatic in all cycle phases (pre-washing, washing, disinfection, drying), it allows the operator to go directly to the sterilisation phase without additional handling.



MILLRACK's elegant design allows combining various pieces of equipment for a perfect sterilisation procedure: from cleaning to thermodisinfection, from packaging to sterilisation up to storage, depending on the need. The system is provided with integrated electrical and water filling and drain hook-ups that allow devices to be directly connected. With MILLDROP'S osmosis system it is possible to fill distilled water into the steriliser (with automatic filling) without any operator intervention. There are also two convenient removable trays for preparing instruments and materials. A practical three-compartment (optional) drawer unit can be integrated with the Millrack sterilisation system.

DURR Vista Scan Perio



Existing X-ray installations can usually remain in operation. Can be set up flexibly on tables or on the wall. Can be set up in a central position – no darkroom. Can be operated as a stand-alone (workstation with PC, monitor, VistaScan) or as a ne

Connection to current patient management software systems, e.g. for orthodontics and additional image analysis systems

No additional equipment costs on extending the practice or with increased use (with VistaScan)network solution.

- Technical Data VistaScan Perio
- Dimensions (HxWxD) 52,3 x 31 x 29,3 cm
- Weight 12,5 kg
- Set-up Wall mounting or on work surface
- Reading noise approx. 45 dB(A)
- PC connection USB 1.1, USB 2.0, Ethernet from DBSWIN 4.5
- Power connection 100-240 V / 50-60 Hz
- Connection power < 60 W
- Medical device class I according to directive 93 / 42 / ECC
- Pixel size selectable from 12,5 – 50 μ m
- Theoretical resolution dep. on image plate max. 40 LP / mm
- Grey scales 16 bit (65536)
- Deletion automatic
- Plate transport without contact in cassette system
- Software DBSWIN 4, Third-party software may be supported
- Formats 2 x 3 / 2 x 4 / 3 x 4 / 2,7 x 5,4 / 5,7 x 7,6 cm

LOKKI YAP Dental Laser



Are you facing difficulty in practicing Periodontics?

Is your Surgery equipped to deal with Periodontics and Post implant cases?

Would you like to achieve results without post-operative pain and work in a bloodless environment?

Do you want to achieve Endo treatment within ONE appointment and treat 4th degree decay in one session?

Statistics released in 2008 revealed 47% of dentists failed to meet their first year UDA targets!

Learn how this New Technology will help you achieve your UDA target faster.

LEARN HOW TO ACHIEVE SUPERIOR RESULTS ON 80% OF DENTAL CASES

Learn how to treat 60% - 80% of population > 40 years old who are experiencing progressive periodontic disease

Learn a new way to treat Hypersensitivity

Don't be left behind and let your competition take your patients!

Applications:

- In Conservative Dentistry:
 - Cavity treatment (on alive or devitalized teeth)
 - Enamel physical etching
 - Pits and fissures
 - Neck desensitization
 - Mylolyse
 - Direct capping
 - Pulpotomy
- In Endodontics:
 - Biopulpectomy
 - Endodontic haemostasis
 - Broken instruments removal
 - Root canal retreatment
- Post removal
- In Fixed prosthesis:
 - Gingival preparation before impression
 - Dentine treatment before prosthesis bonding
- In Periodontology:
 - Haemostasis
 - Gingivectomy, gingivoplasty
 - Palatal cauterization after incision
 - Fistula sterilization
 - Abscess incision & sterilization

METASYS Suction



Central Suction with Amalgam Separator for 1 surgery

Technical data:

Connection voltage	230 V AC
Frequency	50 / 60 Hz
Max. current consumption	3.7 - 3.5 A
Electricity consumption	0,37/0,44 KW
Vacuum range regulated	180 mbar
Max. ambient temperature	40° C
Max. water delivery rate	4.5 l/min (1.5 l/min suction side + 3 l/min spittoon bowl)
Separation rate, COMPACT Dynamic	96.4%
Amalgam container exchange interval	6 - 8 month
Weight	40 kg

METASYS BORA Dry New: for 1 surgery



Technical data:

Tank capacity in l	30
Output of electrical motor in kW	1.1
Rate of delivery in l/min	66
Other equipment which can be operated simultaneously	1
Dimensions in cm (WxDxH)	680x450x650 mm
Power supply V AC	230
Frequency in Hz	50
Pressure range in bar	6-8
Dryer	Yes

OPTIKA Dental Microscopes

DOPTIKAM 3 Microscope Camera



Universal system for video and still-image capturing through eyepieces at MIDDLE resolution. It can be used both with biological and stereo microscopes. An optional adapter (depending on the microscope model) can be used to connect it to trinocular microscopes.

C-mount system for video and still-image capturing at MIDDLE resolution.

An optical adapter (included) can be used to connect it to the eyepiece tube of monocular and binocular microscopes.

- Resolution: 1280 x 1024 pixels (1.3 M pixels)
- Sensor: CMOS 1/2"
- Pixel size : 5.2 μm x 5.2 μm
- Imaging area: 6.67 mm x 5.33 mm
- Frame rate at Full resolution 7.5 frames/sec
- Frame rate at Half resolution 15 frames/sec
- Optical: Format 1/2"
- Aspect: ratio 5:4
- s/n ratio: max 45 dB
- Dynamic: range 68.2 dB
- ADC: 10 bit
- Data output: (Uncompressed video) 3x8 bit
- Exposure: range 24 bit
- Sensitivity: 0-70 msec
- System: requirements Windows 2000 / XP SP2 , USB 2.0 port Windows 2000 / XP SP2, USB 2.0 port
- Software: Optika Vision Lite, TWAIN interface, several freeware for image elaboration
- Capture: Features Continuous auto white balance, continuous auto exposure

OPTIKA Microscope B-500Tph



Optika Microscope B-500Tph with Phase Contrast suited for the Dental Practice. Camera is an added option available in our range.

This brand new series of B-350s strike the right balance between price and quality. Thanks to the variety of its microscopes, it can be successfully used both in advanced teaching situations and in laboratories. Professional users will certainly value the technical characteristics of the B-350 series that make its high quality microscopes resistant and reliable.

Microscope stand

Modern and ergonomic, this stand is made from die-cast aluminium. Macro and micrometric focusing (graduated, 0.002mm) with coaxial controls. Adjustable focusing tension and upper sliding stop.

Heads

They are available in binocular and in trinocular version suitable for photography/video applications. Both heads are equipped with interpupillary distance control (55-75 mm) as well as with dioptic compensation. WF10x/20mm eyepieces also suitable for people wearing spectacles. All heads are 360° rotatable and 30° inclined.

Illuminator

The illuminating system consists of an LED illuminator. The luminous intensity regulation takes place through a rheostat located on the right-hand side of the microscope base.

EKLER Dental Lights

EKLER LUXIMA L Operating Light



LUXIMA L is called the new reference of lighting in the dental surgery. Because of its characteristics, it is the product with the highest output on the market. LUXIMA L is the only lighting containing a colour-indicator of 98% and in addition to that the light is sensed as comfortable. Containing 6 tubes of daylight (6500°K) of 58W each, LUXIMA L delivers an amount of light of 20100lumen. The light is distributed over the whole work space, so that no shadows and contrasts of light can emerge. Thus, LUXIMA assures a light intensity higher than 1500 LUXES over the oral cavity.

Thanks to multiple studies and tests, LUXIMA has been designed to beam the maximum of light on the work space. The dispersion of the light (approximately 60% to the ground, 10% sideways and 30% to the ceiling) leads to a constant lighting and avoids eyestrain.

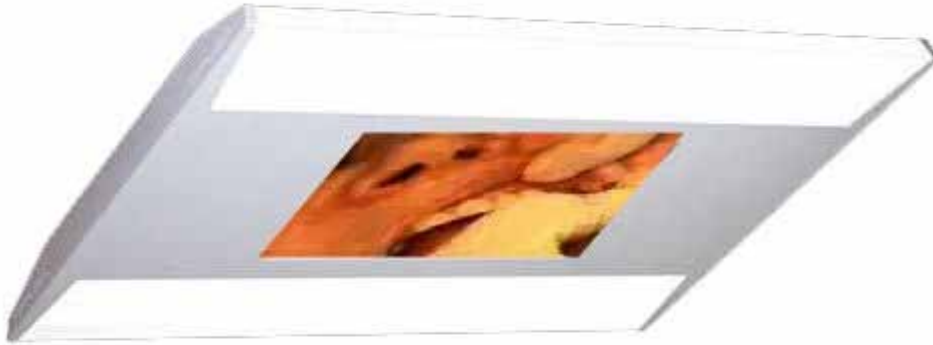
Screen:

The lightings LUXIMA are equipped with professional LCD³² screens, whose reliability and quality correspond to the high development of LUXIMA. Those screens are anti-reflective, and furthermore they do not contain marks of images. Our screens are light, compact, silent and designed to receive connections of video and computer sources, so that one can experience the best scenes and moments of cinema and television.

Transmission:

LUXIMA has a wireless transmission so that the dentist is not obliged to run extra cables in the surgery. On this way, the user has the possibility to permanently connect several video sources and to transmit the selected video source to the roof lamp.

EKLER LUXIMA C Operating Light



As **LUXIMA C** is lighter and more compact, it is advantageous in limited work spaces and when needed a high levelled lighting. Possessing 6 tubes of 55W, LUXIMA provides 27000 lumen and 6500°K of daylight. The light is radiated into the whole room (approximately 45% to the floor, 10% sideways and 45% to the ceiling). The constant light avoids eyestrain. Thanks to a wireless switch the dentist can vary the intensity of the light according to his needs.

Screen:

The lightings LUXIMA are equipped with professional LCD°32 screens, whose reliability and quality correspond to the high development of LUXIMA. Those screens are anti-reflective, and furthermore they do not contain marks of images. Our screens are light, compact, silent and designed to receive connections of video and computer sources, so that one can experience the best scenes and moments of cinema and television.

Your patient will be thrilled.

Transmission:

LUXIMA has a wireless transmission so that the dentist is not obliged to run extra cables in the surgery. On this way, the user has the possibility to permanently connect several video sources and to transmit the selected video source to the roof lamp.

EKLER ELiO



The fruit of the research undertaken by the EKLER company has produced an exciting product: ELIO. This is an original concept calling upon the most advanced technologies with LED in today's market. Because of this, ELIO presents a plethora of advantages to the marketplace compared to that of a conventional halogen based bulbs: cold lighting and unlimited lifespan.

WELCOME TO THE LIGHT

Vision is affected by the size of the object and contrasts, is circumvented by the development of ELIO based on a study of visual acuity to obtain the best level of lighting. The activities of the professionals in the dental field require observation of minute details in a small area of a certain field of view. Thus the vision of details requires a weak contrast whereas a high level of lighting is needed to ensure the best lighting to reduce ocular fatigue.

Thus LED has a very high output, ELIO measures 35.000 LUXES of "sunbeams" into your field of vision. No whitish or yellowish light anymore. ELIO creates the perfect condition of visual comfort with its 6.500°K of daylight while giving you uniform light in your daily practice and without casting any clouds. Because of this, there will be no need to change the bulbs in a frequent manner and there is no reduction in the intensity of the light either. ELIO will always give you the same light as from the first day.

FREEDOM TO COMMUNICATE

The integrated camera will become an essential tool to communicate with your patients, just as the newspaper is to every day's life as a means to communicate the news. The operation ELIO is discreet and will not interrupt the patients' care. With its autofocus feature, it will "free-up" your hands to do the work that is needed to be done on the patient and thereby saves time, while you are explaining the specific treatment and showing the patients the work so they understand the quality of care that you are presenting to them, in a professional manner.

ELIO supports you from the description of your plans to their realisation. You will be very grateful for its help as it meets your demands of hygiene, prophylaxis, prevention and prosthetic acts. If your job consists of surgical acts or as well of nidation, ELIO will be of great value for you, because you can film and record your interventions. You can profit of this in scientific communications or when exchanging experiences with one's peers. ELIO is the best tool a dentist can use in litigation issues.

Dental Camera's

SATELEC Sopro 617



Optimized ergonomics

The curved design of the SOPRO 617 camera handpiece provides increased (15° more) viewing access into the patient's mouth. Its 105° angle of view differentiates it from other cameras on the market by allowing for better exploration of the distal areas.

The rounded shape and extremely reduced dimensions of the camera head improve patient comfort while preventing any trauma to the mouth. Maximum access and unequalled comfort in mouth!

High-fidelity images.

The new optical system of the SOPRO 617 is equipped with an aspheric lens which eliminates distortion and provides a more uniform quality image. Its optimized angle of view enables perfect visibility even into the hard-to-reach rear areas of the mouth.

Unmatched lighting system

The new SOPRO 617 lighting system is composed of the latest generation LEDs which utilize condensers to focus the light and produce a very powerful beam: the image is luminous in any circumstance the emitted heat is reduced the entire image is uniformly illuminated (minimal shading).

Auto-focus and large depth of field

With no adjustment necessary, the obtained image is perfectly clear. This fully- automatic focus saves time and is effective without any intervention from you.

Sopro Touch, The "original"

Freeze one or four images on the screen with a simple glide over the Sopro Touch. The sensitivity of this touch prevents blurry images and allows you to work in complete confidence.

Plug and Play technology

SATELEC Sopro 717



The camera that sets more than just the tone. Innovative look and design. Equipped with the “SoproTouch” and “SoproShade” concepts. The dentists’ ideal tool!

One of the major advantages of the Sopro 717 is that the distal part is extremely fine. Its design, innovative look and restraint all mean that it fits perfectly into all working environments without disrupting the way you are used to doing things.

A highly sophisticated optical unit and high quality electronics which have been developed around a 1/4” CCD mean that the Sopro 717 can offer you exceptional image quality.

Whatever the selected position is, the image becomes clear in a moment thanks to the very large depth of field the Sopro 717 is offering you.

3 pre-selections available by clicking: macro (1 to 5 mm), intra-oral (5 to 30 mm) and extra-oral (30 mm to infinity).

Optimise your images under all circumstances thanks to a lighting system using 8 new generation LEDs which supply 50% more light than conventional LEDs.

In addition to video and S-video outputs, the Docking station has a USB2 digital video output.

RENZO Intra-oral Video Camera



The all new RENZO RV-82 intra oral video camera can be used directly with your computer, integrated into your dental unit or used in the analog TV type monitor environment; an all in one diagnostic tool. Its design is simple and balanced for ease of use and reliability.

RENZO is an easy to use dental camera combining its proprietary lens system with the flexibility of its modern digital devices resulting in superior image quality. The easy to use slider focus system allows you to move from intra oral to extra oral mode without changing lenses, all at the touch of your finger.

Capturing single or multiple images is as simple as the touch of a button. RENZO utilizes a touch sensitive image capture button on the headpiece just below your finger ready to activate its multiple functionality.

RENZO's superior image quality, and high video transmission speed, using built in USB2 connectivity, gives your office additional flexibility that results in better patient doctor communication and improves case acceptance.

Other new features added to the all new RENZO is the, improved depth of field and the addition of its unique "Look back Angle", see sketch on the left of page. This new feature allows you to see what is behind the tooth not just what is above it.

Ritter's LYNX™ proprietary imaging software is supplied with every digital camera sold at no additional cost. The LYNX software is DICOM 3 compliant, and integrates all the imaging tools supplied by Ritter Imaging. LYNX 3D™ integrates all 3D tools sold by Ritter Imaging.

RENZO carries a full two (2) year warranty replacement program at no additional cost.

MEDONTIC

Repair and Maintenance



Planned Preventive Maintenance twice a year thoroughly checks your dental chair performance

(No additional travel time charged to this service)

Any spare parts required will be quoted separately. Once authorised, we will purchase, deliver and install on your behalf. Installation of parts is excluded from this service and will be charged at the ad-hoc hourly billed rate of £60 per hour plus travel time. (See below for coverage area)

To take advantages of this offer please contact our Services and Repairs department for more details.



Contact Details



Medontic Ltd.
Spencer House
3 Spencer Parade
Northampton
NN1 5AA
England
U.K
Tel: 0870 4434 970 (National)
Fax: 0160 4633 457

Commercial Director



Please contact Maz on:
maz@medontic.com
Tel: 0870 4434970
Fax: 01604633457

Sales and Marketing Executive



Please contact Rashed on:
sales@medontic.com
Tel: 07929796149
Fax: 01604633457

Customer Care Consultant:



Please contact Pawel on:
info@medontic.com
Tel: 0870 4434970
Fax: 01604633457

Service Manager



Please contact Abbi on:
Equipment Support:
service@medontic.com
Tel: 07929784735
Fax: 01604633457